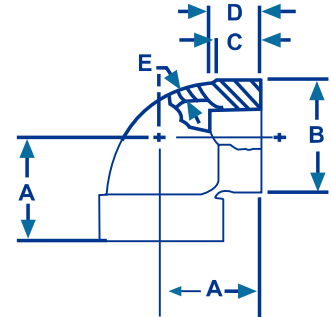




Codo de 90° REF

90° elbows, banded

**300 lbs.
Hierro maleable**



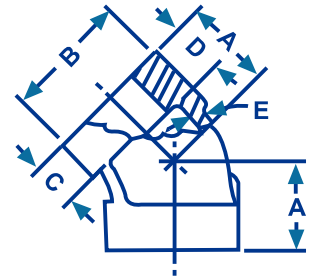
MEDIDAS	A	B	C	D	E
3/8"	1.060	1.120	0.440	0.470	0.150
1/2"	1.250	1.340	0.500	0.570	0.160
3/4"	1.440	1.630	0.560	0.640	0.180
1"	1.630	1.950	0.620	0.750	0.200
1 1/4"	1.940	2.390	0.690	0.840	0.220
1 1/2"	2.130	2.680	0.750	0.870	0.240
2"	2.500	3.280	0.840	1.000	0.260
2 1/2"	2.940	3.860	0.940	1.170	0.310
3"	3.380	4.620	1.000	1.230	0.350
4"	4.442	5.955	1.181	1.425	0.460



Codo de 45° REF

45° elbows, banded

**300 lbs.
Hierro maleable**



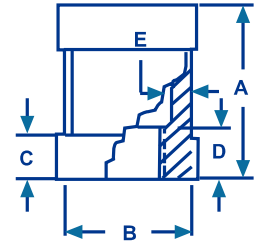
MEDIDAS	A	B	C	D	E
1/2"	1.000	1.340	0.500	0.570	0.16
3/4"	1.130	1.630	0.560	0.640	0.18
1"	1.310	1.950	0.620	0.750	0.20
1 1/4"	1.500	2.390	0.690	0.840	0.22
1 1/2"	1.690	2.680	0.750	0.870	0.24
2"	2.000	3.280	0.840	1.000	0.26



Cople Reforzado

Couplings banded

**300 lbs.
Hierro maleable**



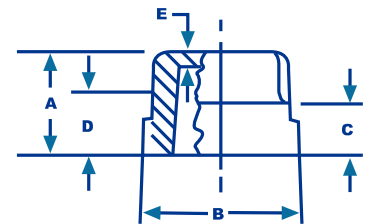
MEDIDA	A	B	C	D	E
1/2"	1.870	1.340	0.500	0.570	0.16
3/4"	2.120	1.630	0.560	0.640	0.18
1"	2.370	1.950	0.620	0.750	0.20
1 1/4"	2.870	2.390	0.690	0.870	0.22
1 1/2"	2.870	2.680	0.750	0.870	0.24
2"	3.620	3.280	0.840	1.000	0.26



Tapón Cachucha

Caps Banded

**300 lbs.
Hierro maleable**



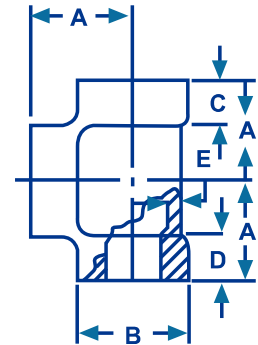
MEDIDA	A	B	C	D	E
1/2"	0.980	1.340	0.500	0.570	0.16
3/4"	1.080	1.630	0.560	0.640	0.18
1"	1.260	1.950	0.620	0.750	0.20
1 1/4"	1.380	2.390	0.690	0.840	0.22
1 1/2"	1.430	2.680	0.750	0.870	0.24
2"	1.680	3.280	0.840	1.000	0.26



Tee Reforzada

Tees Banded

**300 lbs.
Hierro maleable**



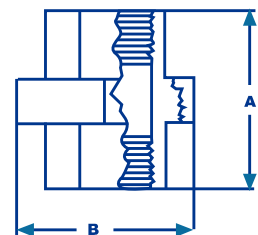
MEDIDA	A	B	C	D	E
3/8"	1.060	1.120	0.440	0.470	0.150
1/2"	1.250	1.340	0.500	0.570	0.160
3/4"	1.440	1.630	0.560	0.640	0.180
1"	1.630	1.950	0.620	0.750	0.200
1 1/4"	1.940	2.390	0.690	0.840	0.220
1 1/2"	2.130	2.680	0.750	0.870	0.240
2"	2.500	3.280	0.840	1.000	0.260
2 1/2"	2.940	3.860	0.940	1.170	0.310
3"	3.380	4.620	1.000	1.230	0.350
4"	4.600	5.930	1.110	1.300	0.460



Tuerca Unión

Unions, brass to iron seat

**300 lbs.
Hierro maleable**



MEDIDA	A	B
1/2"	1.810	1.760
3/4"	2.120	2.150
1"	2.310	2.480
1 1/4"	2.660	3.020
1 1/2"	2.850	3.280
2"	3.230	3.960